

Product description

- The mic-sensor with one analogue output measures the distance to an object within the detection zone contactless. A signal proportional to distance is created according to the adjusted window margins of the analogue characteristic curve.
- The sensor automatically detects the load put to the analogue output and switches to current output or voltage output respectively.
- Choosing between rising and falling output characteristic is possible.
- The sensors are adjustable using Teach-in processes via the Com-channel (Pin 5).
- Using the LinkControl adapter (optional accessory) all Teach-in and additional sensor parameter settings may be made by a Windows-Software.

Important instructions for assembly and application

All employee and plant safety-relevant measures must be taken prior to assembly, start-up, or maintenance work (see operation manual for the entire plant and the operator instruction of the plant).

The sensors are not considered as safety equipment and may not be used to ensure human or machine safety!

The mic-sensors indicate a **blind zone**, in which the distance cannot be measured. The **operating range** indicates the distance of the sensor that can be applied with normal reflectors with sufficient function reserve. When using good reflectors, such as a calm water surface, the sensor can also be used up to its **maximum range**. Objects that strongly absorb (e.g. plastic foam) or diffusely reflect sound (e.g. pebble stones) can also reduce the defined operating range.

Assembly instructions

- Assemble the sensor at the installation location.
- Plug in the connector cable to the M 12 connector.

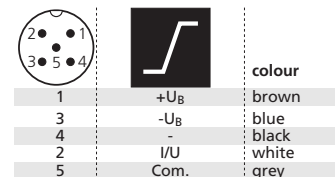


Fig. 1: Pin assignment with view onto sensor plug and colour coding of the microsonic connection cable

Synchronisation

If the assembly distances shown in Fig. 2 for two or more sensors are exceeded the integrated synchronisation should be used. Connect Sync/Com-channels (pin 5 at the units receptable) of all sensors (10 maximum).

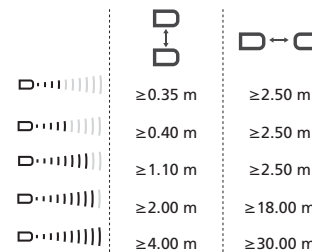


Fig. 2: Assembly distances

Start-up

mic-sensors are delivered factory made with the following settings:

- Rising analogue characteristic
- Window margins for the analogue output set to blind zone and operating range
- Maximum detection range set to maximum range

Set the parameters of the sensor using the Teach-in procedure to adjust the analogue characteristic curve.

Operation

mic-sensors work maintenance free. Small amounts of dirt on the surface do not influence function. Thick layers of dirt and caked-on dirt affect sensor function and therefore must be removed.

Note

- mic-sensors have internal temperature compensation. Because the sensors heat up on their own, the temperature compensation reaches its optimum working point after approx. 30 minutes of operation.
- The load put to the analogue output is detected automatically when turning supply voltage on.
- If no signal is detected for 20 seconds during teach-in procedure the made changes are stored and the sensor returns to normal mode operation.
- You can reset the factory settings at any time, see »Reset to factory settings«.



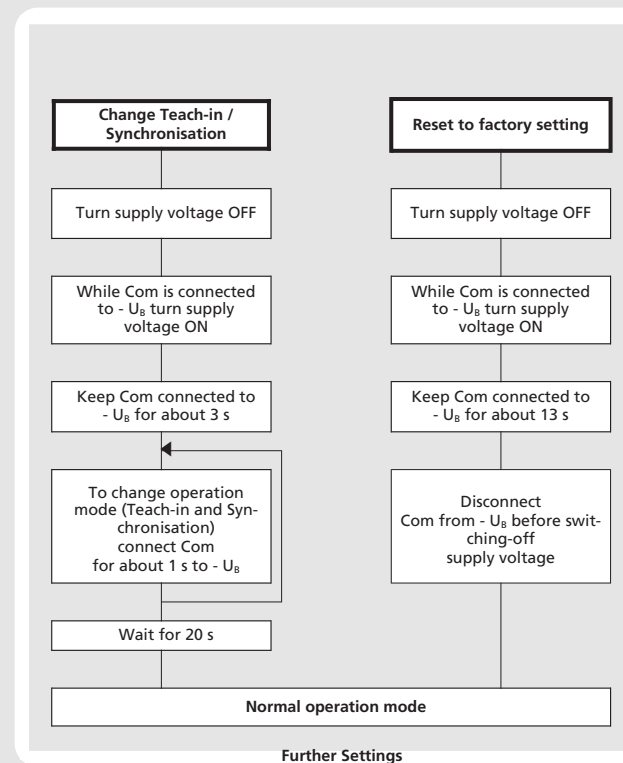
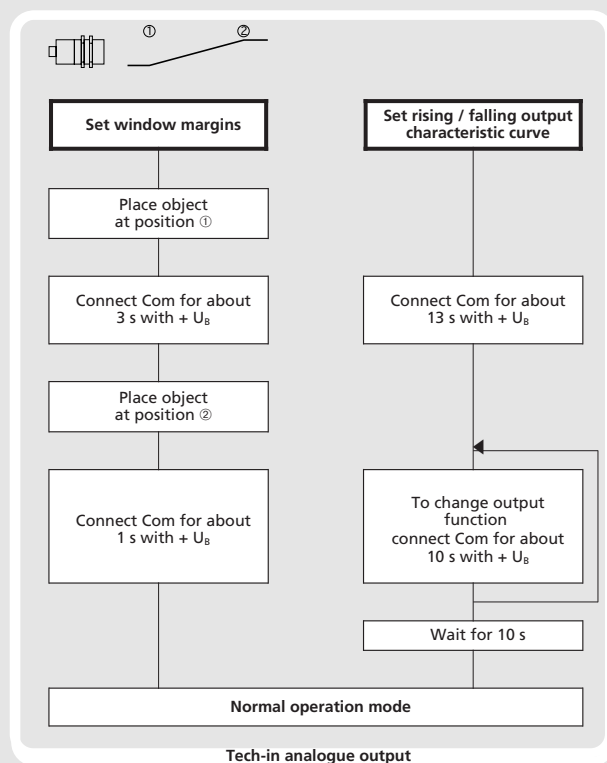
2014/30/EU

Operating manual

mic Ultrasonic Sensors with one analogue output

mic-25/IU/M
mic-35/IU/M
mic-130/IU/M
mic-340/IU/M
mic-600/IU/M

Set the mic-sensor using the Teach-in procedure



Enclosure Type 1
For use only in industrial
machinery NFPA 79 applications.

The proximity switches shall be used with a Listed (CYJV/7) cable/connector assembly rated minimum 32 Vdc, minimum 290 mA, in the final installation.

Technical data

	mic-25...	mic-35...	mic-130...	mic-340...	mic-600...
<p>Analogue output</p>					
Blind zone	0 to 30 mm	0 to 65 mm	0 to 200 mm	0 to 350 mm	0 to 600 mm
Operating range	250 mm	350 mm	1,300 mm	3,400 mm	6,000 mm
Maximum range	350 mm	600 mm	2,000 mm	5,000 mm	8,000 mm
Angle of beam spread	Please see detection zone	Please see detection zone	Please see detection zone	Please see detection zone	Please see detection zone
Transducer frequency	320 kHz	400 kHz	200 kHz	120 kHz	80 kHz
Resolution, sampling rate	0.025 mm to 0.10 mm, depending on the analogue window	0.025 mm to 0.17 mm, depending on the analogue window	0.18 mm to 0.57 mm, depending on the analogue window	0.18 mm to 1.5 mm, depending on the analogue window	0.18 mm to 2.4 mm, depending on the analogue window
<p>Detection zones for different objects:</p> <p>The dark grey areas are determined with a thin round bar (10 or 27 mm dia.) and indicate the typical operating range of a sensor. In order to obtain the light grey areas, a plate (500 x 500 mm) is introduced into the beam spread from the side. In doing so, the optimum angle between plate and sensor is always employed. This therefore indicates the maximum detection zone of the sensor. It is not possible to evaluate ultrasonic reflections outside this area.</p>					
Reproducibility	± 0,15 %	± 0,15 %	± 0,15 %	± 0,15 %	± 0,15 %
Accuracy	± 1 % (Temperature drift internal compensated, may be deactivated ¹⁾ , 0,17%/K without compensation)	± 1 % (Temperature drift internal compensated, may be deactivated ¹⁾ , 0,17%/K without compensation)	± 1 % (Temperature drift internal compensated, may be deactivated ¹⁾ , 0,17%/K without compensation)	± 1 % (Temperature drift internal compensated, may be deactivated ¹⁾ , 0,17%/K without compensation)	± 1 % (Temperature drift internal compensated, may be deactivated ¹⁾ , 0,17%/K without compensation)
Operating voltage U_B	9 V to 30 V DC, reverse polarity protection (Class 2)	9 V to 30 V DC, reverse polarity protection (Class 2)	9 V to 30 V DC, reverse polarity protection (Class 2)	9 V to 30 V DC, reverse polarity protection (Class 2)	9 V to 30 V DC, reverse polarity protection (Class 2)
Voltage ripple	± 10 %	± 10 %	± 10 %	± 10 %	± 10 %
No-load supply current	≤ 55 mA	≤ 55 mA	≤ 55 mA	≤ 55 mA	≤ 55 mA
Housing	Brass sleeve, nickel-plated, plastic parts: PBT; Ultrasonic transducer: polyurethane foam, epoxy resin with glass content	Brass sleeve, nickel-plated, plastic parts: PBT; Ultrasonic transducer: polyurethane foam, epoxy resin with glass content	Brass sleeve, nickel-plated, plastic parts: PBT; Ultrasonic transducer: polyurethane foam, epoxy resin with glass content	Brass sleeve, nickel-plated, plastic parts: PBT; Ultrasonic transducer: polyurethane foam, epoxy resin with glass content	Brass sleeve, nickel-plated, plastic parts: PBT; Ultrasonic transducer: polyurethane foam, epoxy resin with glass content
Class of protection to EN 60529	IP 67	IP 67	IP 67	IP 67	IP 67
Norm conformity	EN 60947-5-2	EN 60947-5-2	EN 60947-5-2	EN 60947-5-2	EN 60947-5-2
Type of connection	5-pin initiator plug, Brass, nickel-plated	5-pin initiator plug, Brass, nickel-plated	5-pin initiator plug, Brass, nickel-plated	5-pin initiator plug, Brass, nickel-plated	5-pin initiator plug, Brass, nickel-plated
Controls	Yes, via Com-channel	Yes, via Com-channel	Yes, via Com-channel	Yes, via Com-channel	Yes, via Com-channel
Indicators	No	No	No	No	No
Programmable	Yes, with Teach-in and LinkControl	Yes, with Teach-in and LinkControl	Yes, with Teach-in and LinkControl	Yes, with Teach-in and LinkControl	Yes, with Teach-in and LinkControl
Operating temperature	-25°C bis +70°C	-25°C bis +70°C	-25°C bis +70°C	-25°C bis +70°C	-25°C bis +70°C
Storage temperature	-40°C bis +85°C	-40°C bis +85°C	-40°C bis +85°C	-40°C bis +85°C	-40°C bis +85°C
Weight	200 g	200 g	200 g	260 g	320 g
Response time¹⁾	32 ms	64 ms	92 ms	172 ms	240 ms
Time delay before availability	< 390 ms	< 420 ms	< 440 ms	< 530 ms	< 600 ms
Order No.	mic-25/IU/M	mic-35/IU/M	mic-130/IU/M	mic-340/IU/M	mic-600/IU/M
Current output 4 – 20 mA	R _i ≤ 100 Ω at 9 V ≤ U _B ≤ 20 V; R _i ≤ 500 Ω at U _B ≥ 20 V	R _i ≤ 100 Ω at 9 V ≤ U _B ≤ 20 V; R _i ≤ 500 Ω at U _B ≥ 20 V	R _i ≤ 100 Ω at 9 V ≤ U _B ≤ 20 V; R _i ≤ 500 Ω at U _B ≥ 20 V	R _i ≤ 100 Ω at 9 V ≤ U _B ≤ 20 V; R _i ≤ 500 Ω at U _B ≥ 20 V	R _i ≤ 100 Ω at 9 V ≤ U _B ≤ 20 V; R _i ≤ 500 Ω at U _B ≥ 20 V
Voltage output 0 – 10 V	Rising/falling output characteristic R _i ≥ 100 kΩ at U _B ≥ 15 V, short-circuit-proof	Rising/falling output characteristic R _i ≥ 100 kΩ at U _B ≥ 15 V, short-circuit-proof	Rising/falling output characteristic R _i ≥ 100 kΩ at U _B ≥ 15 V, short-circuit-proof	Rising/falling output characteristic R _i ≥ 100 kΩ at U _B ≥ 15 V, short-circuit-proof	Rising/falling output characteristic R _i ≥ 100 kΩ at U _B ≥ 15 V, short-circuit-proof

1) Can be programmed with LinkControl

